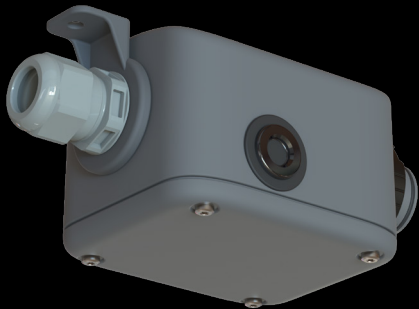


## CONNECTS: CAP.IN CONNECTION BOX

- The CAP.IN is a connection box that is mounted at the beginning of the light line. It has all possible connections for the DATALUX.AC light line system. All cables are connected dust- and splash-water-tight via grommets or an (M25) cable gland and the cables are securely connected from the inside by the Wago connection terminals.

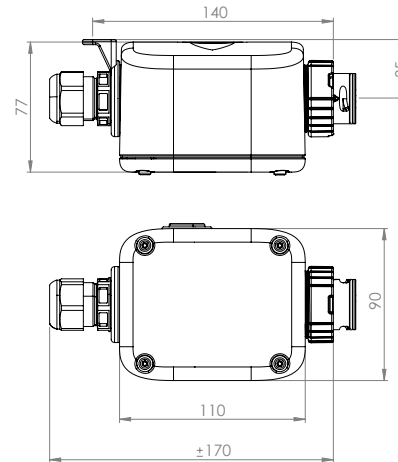


### Features

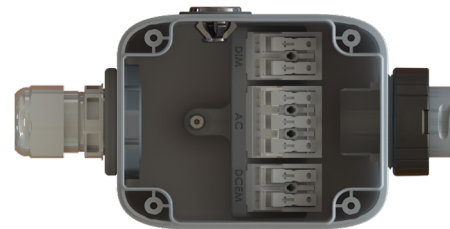
article nr.: LUM-DL02AC-INBX-0002

|                        |                               |
|------------------------|-------------------------------|
| Dimensions box (lxbxh) | 170 x 70 x 90 mm              |
| IP class               | IP65                          |
| IK class               | IK07                          |
| Connectable signals    | AC, Dim, DCEM                 |
| Material               | PA                            |
| Temperature range      | -25°C ~ +35°C                 |
| Weight                 | 1,0 kg                        |
| Mounting hole          | 6 mm                          |
| Required tool for lid  | Torx screwdriver (TX15)       |
| Cable entries          | M25 cable gland + Wiska Clixx |

### Dimensions



### CAP.IN



All products, product specifications and data are subject to change without notice to improve reliability, safety, function, design or otherwise.

### Mounting options

