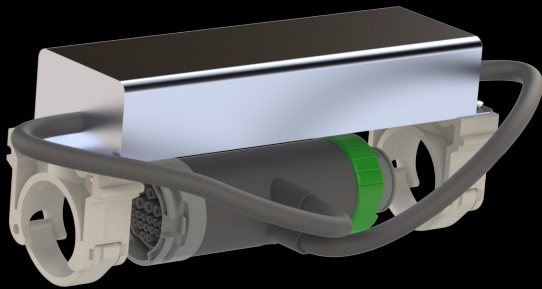


## CONNECTS: TPSU POWER SUPPLY UNIT

- There is a separate power supply unit needed for every FLORALUX.HP fixture.
- This power supply is available in 2 different capacities: 120 W and 150 W.
- The power supply is supplied with a connection piece with water-resistant connectors that can be connected to the fixtures. The clamps for clicking on the fixture are also pre-mounted.
- This power supply unit is also available in a dimmable version. This works with a 0-10V dimming signal. When using this option, keep in mind that you also choose a PLUG.IN with this function.



### 120 W TPSU



### 120 W Power supply

Part nr.: LUM-FL02HP-TPSU-150A-0120

Max. power output	120 W
Power factor	PF $\geq$ 0.95/230V <sub>AC</sub> @ full load
Dimming	None

### 120 W Dimmable power supply

Part nr.: LUM-FL02HP-TPSU-150AB-D120

Max. power output	120 W
Power factor	PF $\geq$ 0.95/230V <sub>AC</sub> @ full load
Dimming	0-10 V – 0-100%

### 150 W TPSU



### 150 W Power supply

Part nr.: LUM-FL02HP-TPSU-150A-0150

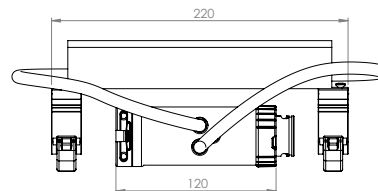
Max. power output	150 W
Power factor	PF $\geq$ 0.95/230V <sub>AC</sub> @ full load
Dimming	None

### 150 W Dimmable power supply

Part nr.: LUM-FL02HP-TPSU-150AB-D150

Max. power output	150 W
Power factor	PF $\geq$ 0.95/230V <sub>AC</sub> @ full load
Dimming	0-10 V – 0-100%

### Dimensions



### Features

Input voltage	200 - 240 V <sub>AC</sub> , 50/60 Hz
Output voltage	Luminaid LV <sub>DC</sub>
Material	Aluminium
Ambient temperature range	-40°C ~ +70°C
Weight	1.2 Kg
IP class	IP 65

All products, product specifications and data are subject to change without notice to improve reliability, safety, function, design or otherwise.