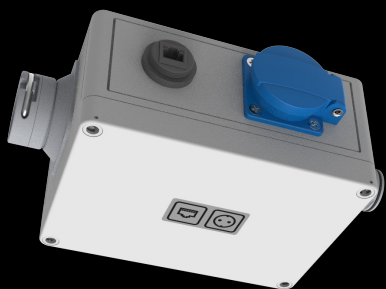


## IQ TRONICS: WORKPOINT

### ETHERNET & SCHUKO SOCKET

- This IQ Tronic enables easy accessibility of AC power or the TC/IP network without the need for additional cable gutters or other equipment. With this Tronic, you can connect for example Wi-Fi access points of your choice, (label) printers or (barcode) scanners.
- Both sockets are dust and splashproof (>IP65) specialised for industrial applications.
- This Tronic can only be used in combination with the DATALUX.IQ light line system.



#### Features

article nr.: LUM-DL02IQ-WPNT-1P1E

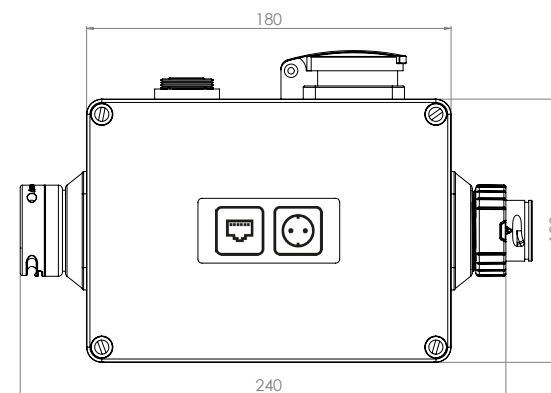
Input voltage	220 - 240 V <sub>AC</sub> , 50/60 Hz
Input power	2 - 42 Watt
Type of signal	Ethernet (TCIP)
Dimensions	180 x 130 x 90 mm
IP class	IP65
IK class	IK07
Weight	675 g

#### Schuko

Maximum power to be connected	40 Watt
Output voltage	220 - 240 V <sub>AC</sub> , 50/60 Hz
IP class (closed)	IP67

#### Ethernet

Type of signal	Ethernet (TCP/IP)
IP class	IP66



All products, product specifications and data are subject to change without notice to improve reliability, safety, function, design or otherwise.